

Countryside Conservation Conference: Closing Remarks

Lam Kin Che 林健枝

Adjunct Professor, The Chinese University of Hong Kong
Chair, Vetting Subcommittee, Advisory Committee on Countryside Conservation
Former Chair, Steering Committee for Biodiversity Strategy and Action Plan



Countryside Conservation Conference 2023
3rd March, 2023



“Role of Countryside for our Future”

- The Keyword: “Future”

The
FUTURE
depends on
what we do
in the
PRESENT.
Mahatma Gandhi

The Work in the Last 3 Years: 3 U's

- Unearth
 - Hidden treasures
- Unleash
- Unlock

Unearthing Hidden Treasures



Legacy as well Heritage



The Work in the Last 3 Years: 3 U's

- **Unearth**
 - Hidden treasures
 - History, legacy, heritage
- **Unleash**
- **Unlock**



The Work in the Last 3 Years: 3 U's

- **Unearth**
 - Hidden treasures
 - History, legacy, heritage
- **Unleash**
 - Potentials
 - Creativity
- **Unlock**
 - Removing hurdles & constraints

These Have Been Possible, only because ... 3E's

- Embrace
- Engage
- Empower

The 3S's As We Move Into the Future

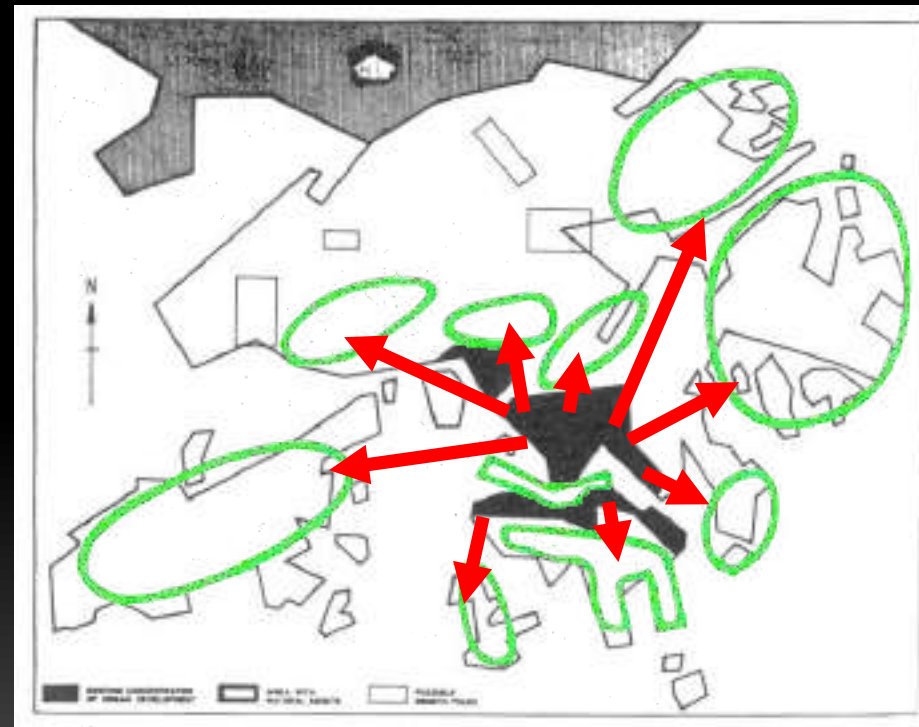
- Symbiosis as our guide
- Sustainability is our goal
- Strategic in our approach

Symbiotic

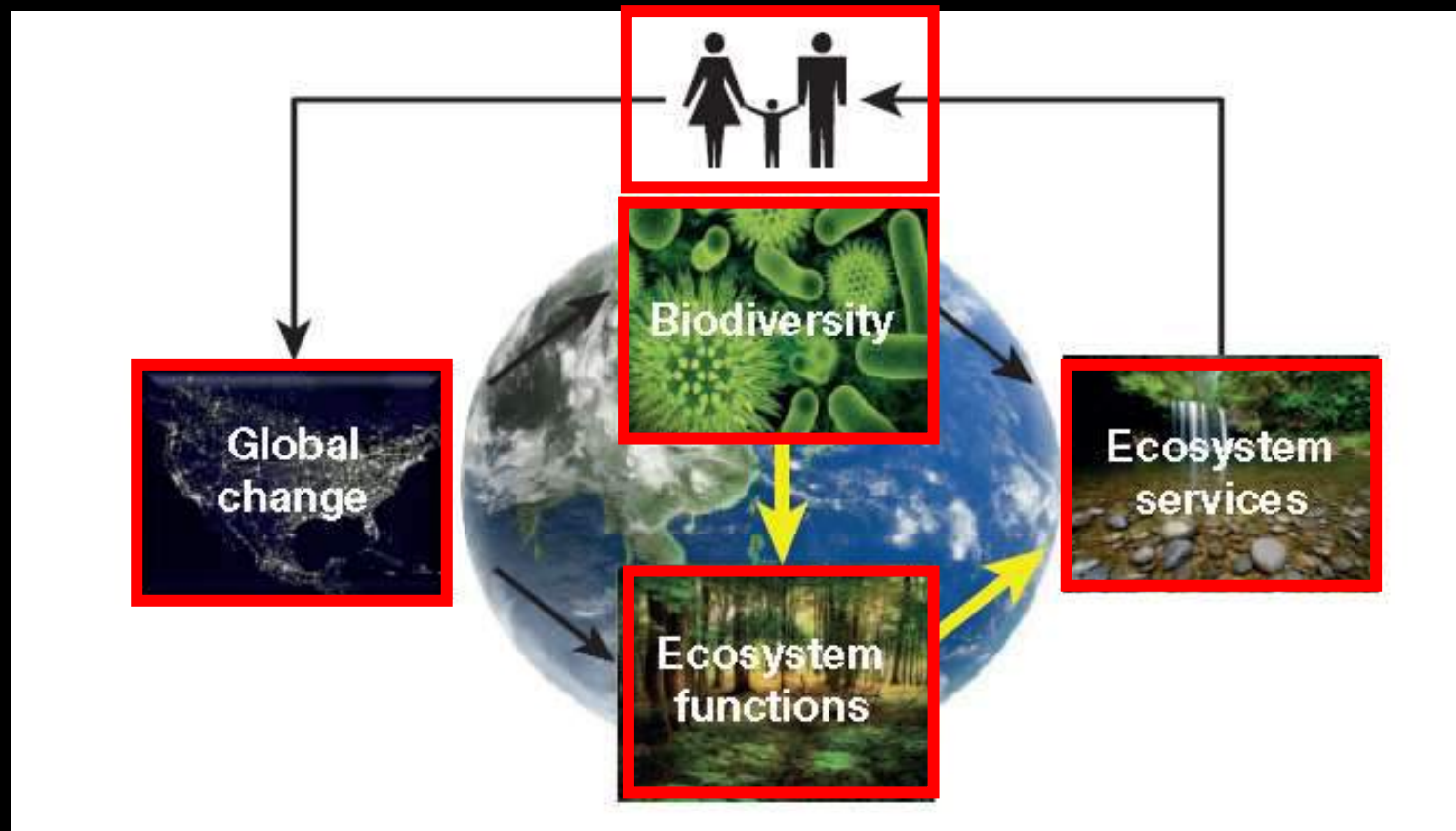
- Move away from dichotomous mindset
 - Urban - rural
 - Indigenous – passer-by
 - Government – NGO
- Recognizing city-countryside is an integral entity
- Transiting from “You – I” mentality to a “Common Future”

Awakening: Countryside is Our Extended Home

- The extended home of a compact, high-rise city
- “The Home” – to be valued, treasured and managed



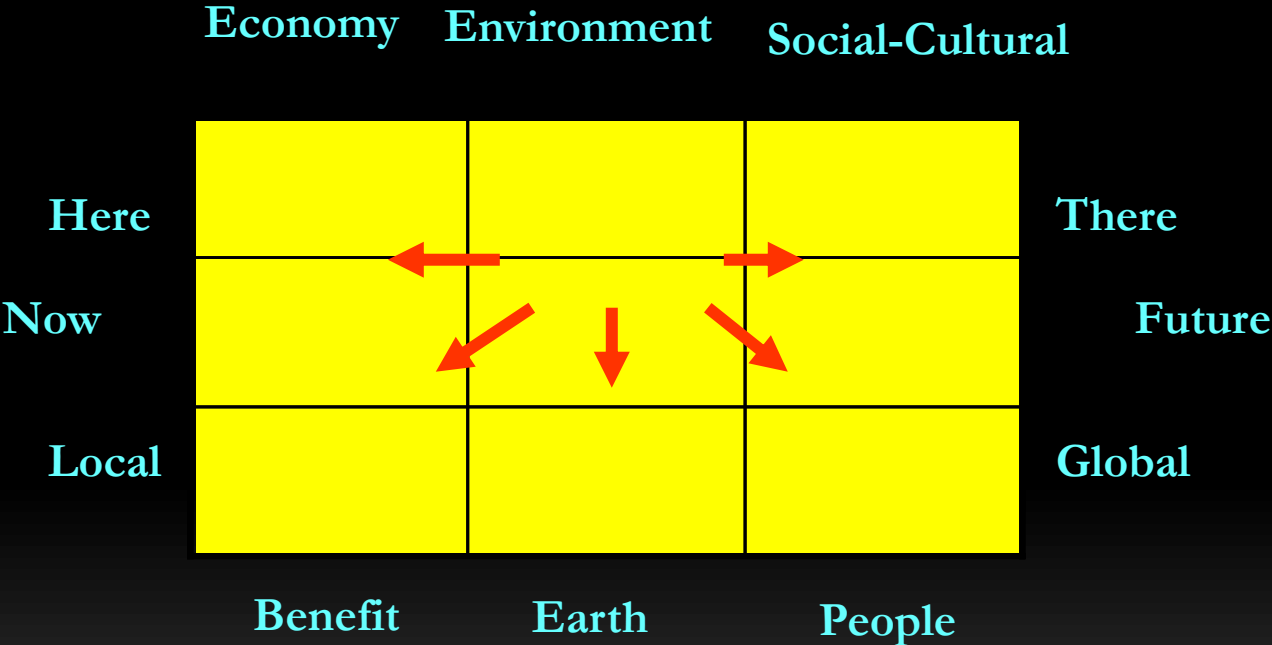
Interlinkage Between City, Countryside, Biodiversity, Ecosystem Services and Global Change



The 3S's As We Move Into the Future

- Symbiosis as our guide
- Sustainability is our goal
- Strategic in our approach

Sustainable Development



Source: Rob Verheem
Dutch EIA Commission 2000

To be Sustainable.....

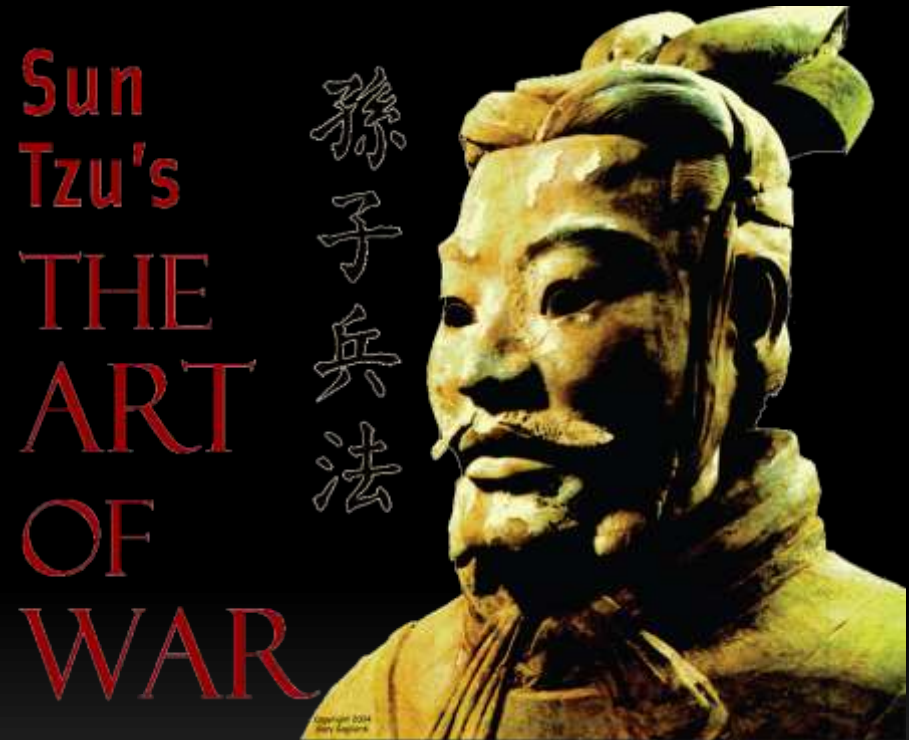
- “Stopping a bad project” => “Making the good happen”
- What happens to these projects after 5 to 10 years?
- How to make it a self-sustained, regenerative and spontaneous process?
 - Business case?
 - Ownership – “our home”

The 3S's As We Move Into the Future

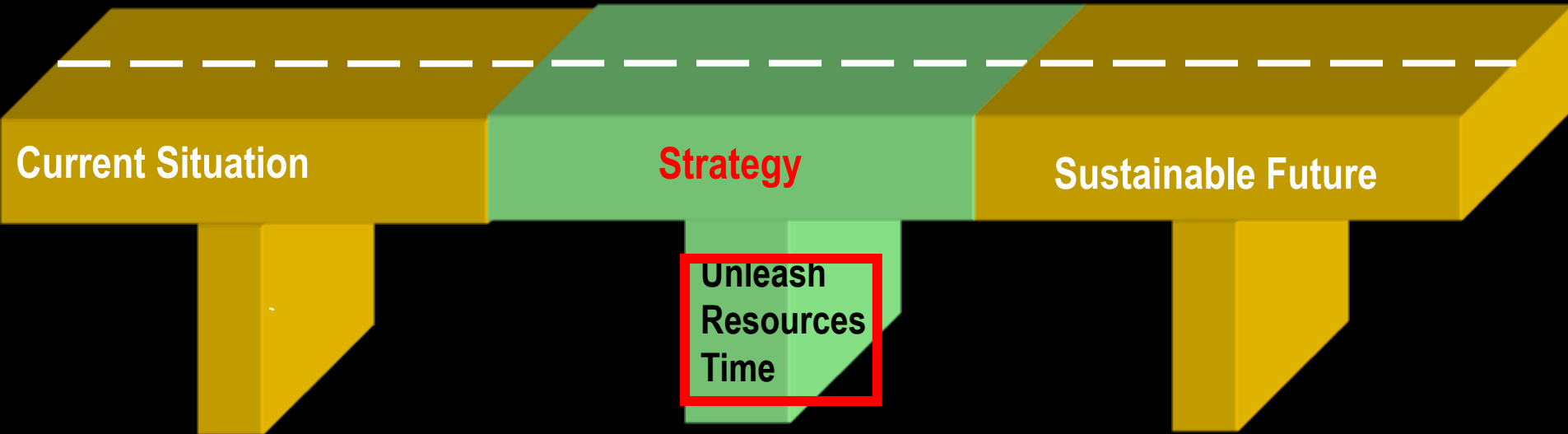
- Symbiosis as our guide
- Sustainability is our goal
- Strategic in our approach

To be Strategic

- Seize the Opportunity, with
 - Small time window
 - Limited resources
 - Multi-stakeholder



The Road to Sustainability



How to be Strategic? [1]

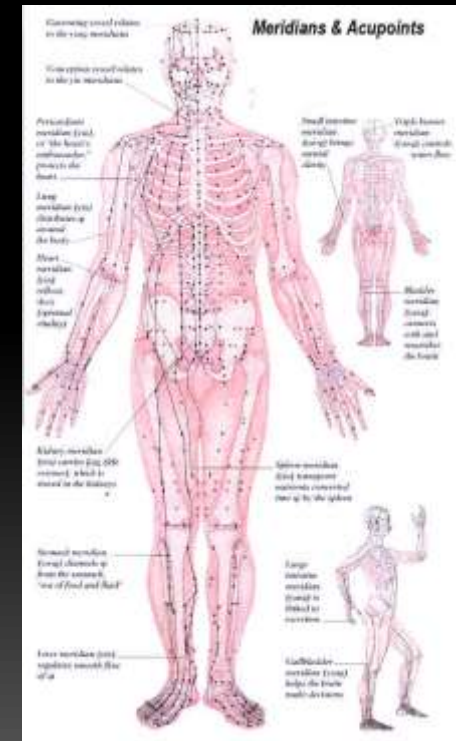
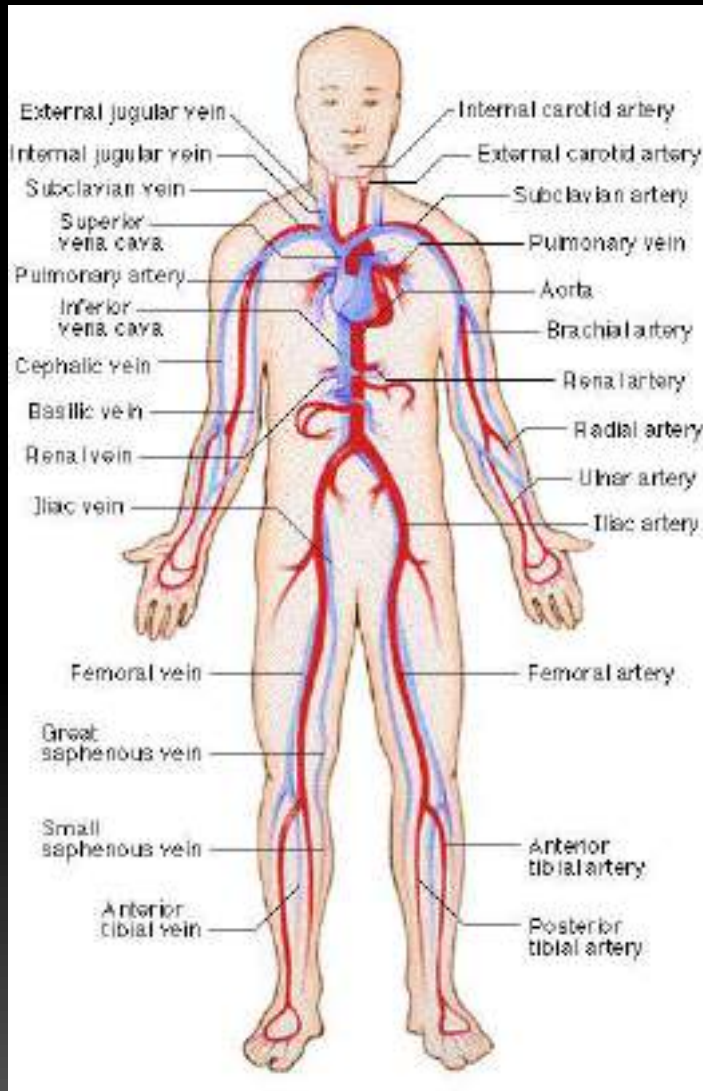
- Acupuncture, radiating, leveraging?
- Lineage, corridors?
- Identify missing/weakest links?
- Piloting, seed money, replication over time and space? Butterfly effect?
- Removing road blocks, unleashing potentials

- *To continue*

How to be Strategic? [2]

- Knowledge creation, retention, management, sharing & learning
 - Data => Information => Knowledge => Wisdom
 - Learning & sharing... “commons”
 - Exchange protocols?
 - Co-creation
- Institution – local social organization? “Yeuk”, multi-center governance?
- Role of government – abdicate for market, policy & infrastructure support

Strategic



*"The future of humanity
lies in cities."*

Kofi Annan
Secretary-General of UN. 2002

Countryside: Battle field for Life

“The city will determine the fate of the remaining biodiversity of our planet. The battle for life will be won or lost there.”

Ahmed Djoghlaf,
Executive Secretary UN Convention on Biodiversity

Central Park in New York City – Embrace it as if it is our Heart



Central Park, New York City

Hong Kong : Treasure it as Our Extended Home



“Human progress is neither automatic nor inevitable”

“人類的進步既非自動，也不是必然的
。 。 。”



Martin Luther King II
馬丁路德金

“The future belongs to those who believe in the beauty of their dreams.”

Eleanor Roosevelt



My Dream



Take-Home Message

- **3 U:** unearth, unleash, unlock
- **3 E:** embrace, empower, engage
- **3 S:** symbiotic, sustainable, strategic

An aerial photograph of a large, calm lake with a vibrant blue-green hue. The lake is surrounded by dense, lush green forested islands and peninsulas. In the lower center of the lake, a small white motorboat is moving, leaving a white wake behind it. The overall scene is serene and natural.

THANK YOU

Aspire to inspire, before we expire.

Lam Kin Che *HonFCIWEM, HonFHKIEIA, HonFHKIOA, SBS, JP*
kinchelam@cuhk.edu.hk